



LEA *Express*

March 14, 2008

A weekly compilation of Association news, minutes, upcoming events and tips for LEA Members.

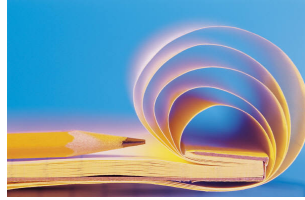
In This Issue

- PROCOM Update
- LEA Board Minutes
-03-03-08
- Calendar of Events

Contact Us

LEA Office
4920 Normal Blvd
Lincoln NE 68506
489-7500
489-1221 – Fax
www.lincolneducationassociation.org

PROCOM Update



ProCom Joint Statement 03-10-08

The charge given to ProCom in the 2006-2008 negotiated agreement was to study the workload of certificated staff and publish a report. The original timeline called for a report by January of 2008, but ProCom extended that deadline in order to allow the group to continue to work. We believed we were making progress and additional time might allow us to produce a more useful product outside formal negotiations.

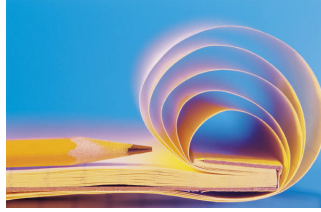
During the 2006-2007 school year ProCom held a series of meetings. The meetings were spent listening to presentations from the LEA and the LPS administrative members of ProCom. LEA presented the results of their Workload Study and identified factors impacting the workload of teachers. The administrators brought the curriculum implementation timeline, a list of district efforts underway that addressed some of the workload issues identified by staff, and a philosophical response to the issue of workload. All ProCom members realize that the work of educators has changed and that the impact of working in a growing district without a comparable increase in budget is challenging.

For 2007-2008 ProCom members decided to increase the amount of time spent together and to lengthen the meetings to a half day each to allow for more in-depth discussions about the issues identified. In addition, Pat Shafer, former NSEA UniServ Director, was asked to facilitate the work and draft the report.

The addition of a third party to draft the report and lead our discussions has been productive and positive. ProCom members are encouraged with the progress we are making and optimistic that we will produce a report that will inform and educate our audiences, as well as provide some direction for the district and LEA members to address workload issues.

The 2007-2008 LEA ProCom members are: Arlene Rea, Jim Rea, Jenni Absalon, Doreen Ainslie, Marcia Benner, Matthew Hoffman, Daniel Ross, and Resa Wiltse. The 2007-2008 LPS Administrator ProCom members are: Susan Gourley, Nancy Biggs, Bill Bucher, Pat Hunter-Pirtle, Marilyn Moore, Dennis Van Horn, and Ruth Ann Wylie.

LEA Board Minutes



Click on the following link to read the LEA Board Minutes.

<http://www.lincolneducationassociation.org/MinutesLEABoard.html>

The LEA Board of Directors is made up of twelve LEA members elected by their peers. The Executive Committee of the Board consists of the President, Vice President, and Secretary-Treasurer. In addition to the Executive Committee, there are three elementary representatives, one middle level representative, two high school representatives and three at-large representatives. The Board meets at the LEA Office twice a month during the school year and once per month during the summer. Members are always encouraged to come and observe.

Calendar of Events



Click on the following link for the LEA Calendar of Events ...

<http://www.lincolneducationassociation.org/calendarofevents.html>